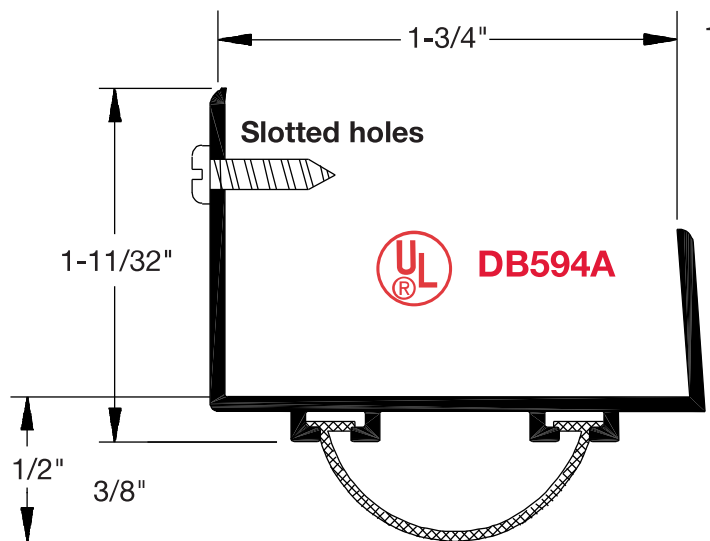


Polyurethane, Vinyl and Pile Seals

All products on this page are U.L. rated and are available with the following:

1. Smooth vinyl insert, order as shown with the illustration below.
2. Vinyl insert with fingers, to order add suffix "F".
3. Polyurethane smooth insert, excellent low temperature characteristics, and excellent resistance to wear. To order add suffix "U".

Examples: DB596DU — specifies DB596 aluminum extrusion with duranodic finish and polyurethane smooth insert. DB596A — specifies a smooth vinyl insert in the aluminum extrusion.



UL10C - Category J Listed

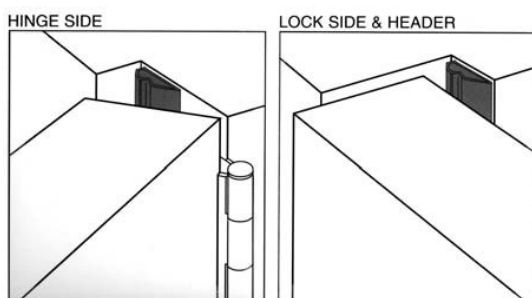
Intended for application to/with listed steel frames and/or classified hollow metal or steel covered composite type fire doors rated up to 3 hours; wood composite and plastic covered type fire doors rated up to 1-1/2 hours, and wood core type 20 minutes

UL10B

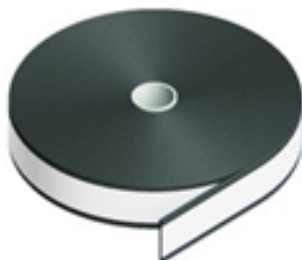
Intended for application to/with listed steel frames and/or classified hollow metal or steel covered composite type fire doors rated up to 3 hours; wood composite type fire doors rated up to 1-1/2 hours, and wood core type 20 minutes w/o hose stream.

Self Adhesive Strips

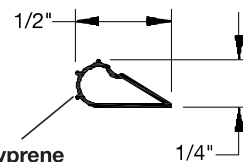
Note: All self adhesive weatherstrips must be applied on clean, dry frames between +50 degrees and +100 degrees F. Smoke seals have a pre-installation shelf life of 6 to 9 months.



797B Black



797W White
797B Black



Polyprene attributes on page 24.



Available in 17', 19', 21', 25' and 500' rolls.

UL10C - Category J Listed

Intended for application to/with listed steel frames and/or classified hollow metal or steel covered composite type fire doors rated up to 3 hours; wood composite and plastic covered type fire doors rated up to 1-1/2 hours, and wood core type 20 minutes

UL10B

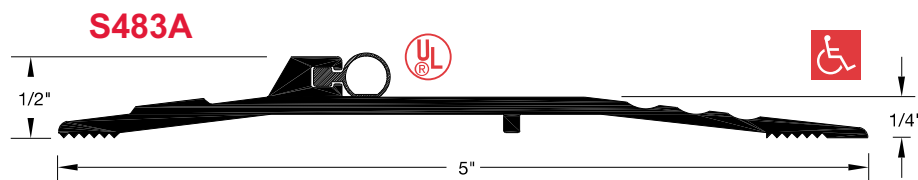
Intended for application to/with listed steel frames and/or classified hollow metal or steel covered composite type fire doors rated up to 3 hours; wood composite type fire doors rated up to 1-1/2 hours, and wood core type 20 minutes w/o hose stream.

Polyurethane, Vinyl and Pile Seals

All products on this page are U.L. rated and are available with the following:

1. Smooth vinyl insert, order as shown with the illustration below.
2. Vinyl insert with fingers, to order add suffix "F".
3. Polyurethane smooth insert, excellent low temperature characteristics, and excellent resistance to wear. To order add suffix "U".

Examples: DB596DU — specifies DB596 aluminum extrusion with duranodic finish and polyurethane smooth insert. DB596A — specifies a smooth vinyl insert in the aluminum extrusion.



UL10C - Category J Listed

Intended for application to/with listed steel frames and/or classified hollow metal or steel covered composite type fire doors rated up to 3 hours; wood composite and plastic covered type fire doors rated up to 1-1/2 hours, and wood core type 20 minutes

UL10B

Intended for application to/with listed steel frames and/or classified hollow metal or steel covered composite type fire doors rated up to 3 hours; wood composite type fire doors rated up to 1-1/2 hours, and wood core type 20 minutes w/o hose stream.

Adjustable Door Stops

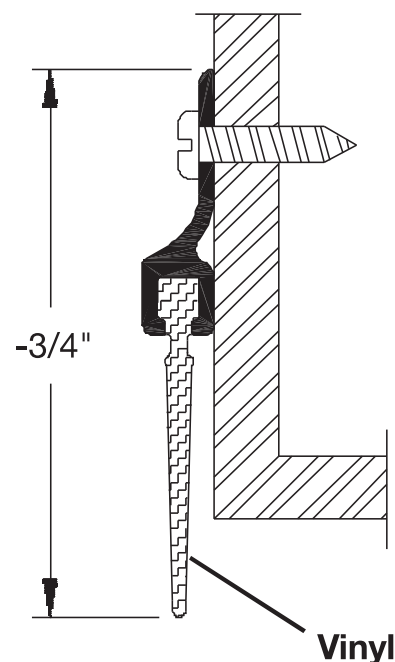
PLEASE NOTE: These products have been fire rated for use as perimeter seals only and shall not be used in lieu of an integral pressed steel stop on fire rated installations.

For heavy duty use, specify 59, 99, 399, 499 or 599 which feature a captive adjustment screw drilled and tapped into the solid bar. One side of each piece mitered if ordered in sets.

Where adjustable door stops are applied on top of existing stops, it is recommended that locks with 3-3/4" backsets be used rather than locks with a 2-3/4" backset. This allows adequate space between the door knob and the weatherstrip.



UL 806A



UL10C - Category J Listed

Intended for application to/with listed steel frames and/or classified hollow metal or steel covered composite type fire doors rated up to 3 hours; wood composite and plastic covered type fire doors rated up to 1-1/2 hours, and wood core type 20 minutes

UL10B

Intended for application to/with listed steel frames and/or classified hollow metal or steel covered composite type fire doors rated up to 3 hours; wood composite type fire doors rated up to 1-1/2 hours, and wood core type 20 minutes w/o hose stream.